

the future | of shelving
innovation, strength and lifetime value



Camshelving®
ELEMENTS SERIES



Enter to Win Cambro's Monthly Product Giveaway!
Scan this QR Code or visit <http://www.cambro.com/win>
Go to www.cambro.com/win for complete contest details.

CAMBRO®
TRUSTED FOR GENERATIONS™
www.cambro.com

innovative, strong composite material withstands all elements

- designed for all areas of food service operations
- ideal for wet, dry, cold or hot environments
- withstands temperatures as cold as -38°C or warm environments up to 88°C
- resistant to moisture; won't rust or corrode



-38° to 88°C



strong technology. hygienic design. affordable.

It's here |

Camshelving® Elements Series is the future of food service shelving. Elements operators have been asking for: an affordable solution without compromise. Utilizing innovative design, it provides extraordinary strength, increased durability and



ole solution.

delivers what food service
izing advanced materials and
hanced food safety.

strong technology

- composite material is as strong as steel and twice as strong as aluminum
- 1980 mm traverse is the longest and strongest in the industry; supports loads up to 272 KG per shelf
 - up to 60% lighter in weight than steel;
 - easy to set up, adjust and change configurations



hygienic design

- shelf plates are easily removed for thorough dishwasher cleaning
- Camguard® antimicrobial protection is permanently embedded in shelf plates
- non-porous surface simply wipes clean



shelving for life

- impervious to moisture, salt and chemicals
- won't peel, dent or warp; remains rust-free
- lifetime warranty against corrosion and rust

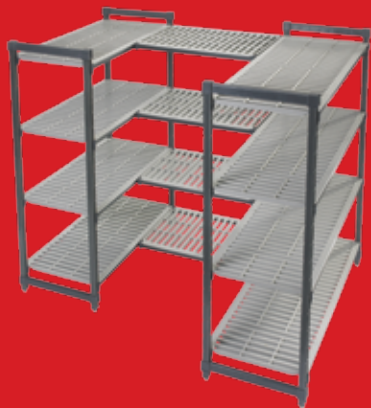


CAMGUARD
ANTIMICROBIAL SHELF PLATES

configurations for every need



starter unit



u-shaped unit



starter unit + add-on unit



mobile unit



starter unit + corner unit

Elements Stationary Units are available in

Heights	1630 mm	1830 mm	2140 mm	
Widths	360 mm	460 mm	540 mm	610 mm
Lengths	760 mm	910 mm	1070 mm	1220 mm
	1380 mm	1530 mm	1830 mm	1980 mm

Elements Mobile Units are available in

Heights	1778 mm	1980 mm			
Widths	460 mm	540 mm	610 mm		
Lengths	910 mm	1070 mm	1220 mm	1380 mm	1530 mm

* Height in chart includes casters



1980 mm traverse

Durable composite material performs even in the toughest environments, including hot, cold, frozen, dry, wet and humid storage areas. Strong, composite technology adapts well to extreme temperatures, and is impervious to moisture and chemicals. Non-corrosive, Elements won't peel, dent, warp or rust—ever.



the longest and strong in the food service

Elements exclusive 1980 mm traverse holds up to 272 Kg per shelf for excellent high capacity storage. Starter and add-on units share a common post with no loss of weight bearing capacity, allowing for maximum use of storage space.

gest
industry



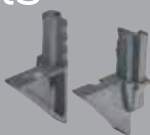
Camshelving® Elements Series components



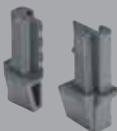
vented and solid
shelf plates



wedge



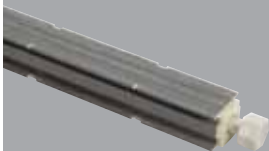
mobile dovetails



dovetails



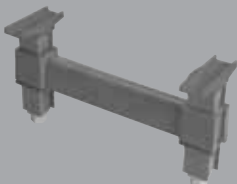
corner connectors



post for stationary
and mobile units



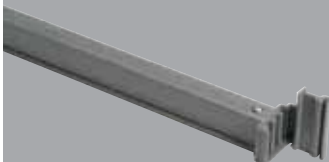
top and bottom
post connectors



dunnage stand



stationary traverse



mobile traverse



casters

Camshelving Elements Series TÜV weight capacity

	traverse length (mm)	US self certification weight bearing capacity		TÜV certification weight bearing capacity	
		Per Shelf	Per Unit	Per Shelf	Per Unit
Single Unit	760 - 1220	363 KG	1451 KG	250 KG	1250 KG
	1380-1530	272 KG	1089 KG	200 KG	1250 KG
	1830	272 KG	1089 KG	175 KG	1250 KG
	1980	272 KG	1089 KG	150 KG	1250 KG
Dunnage Stand	1380 - 1980	454 KG	—	—	—
Corner Unit	910 - 1220	180 KG	720 KG	—	—
Mobile Unit	910 - 1530	—	409 KG	—	—

Dunnage Stands are recommended for traverses 1380 mm or longer.

Corner Connectors are recommended for use on traverses 1220 mm or less.

Due to the weight bearing capacity of casters, maximum weight load on an entire Mobile Elements unit is 409 KG.



strong &
durable

Stop wrestling with your shelving.



**strong as steel
twice the strength
of aluminum**

composite material holds up to 1451 kg. per unit

hygienic design

antimicrobial shelf plates are easy to clean

lifetime warranty

against rust and corrosion

New!

Camshelving

ELEMENTS SERIES



COMPONENTS

For detailed product information please visit www.cambro.com/elements.

CAMBRO
TRUSTED FOR GENERATIONS™



Enter to Win Cambro's Monthly Product Giveaway!
Scan this QR Code or visit <http://www.cambro.com/win>
Go to www.cambro.com/win for complete contest details.

CAMBRO U.S.A.

TEL: (714) 848-1555

FAX: (714) 843-2630

NORTH IRELAND & UK

TEL: 0800 587 0057 Toll Free

FAX: 0845 280 3411

CAMBRO EUROPEAN LOGISTICS

TEL: (31) 168 707 210

FAX: (31) 168 707 211

IRELAND

TEL: 1800 509 046 Toll Free

FAX: 01 633 55 76



Cambro is a proud recipient of
the U.S. President's E-Award
for Excellence in Exporting.